

This article was downloaded by:

On: 28 January 2011

Access details: Access Details: Free Access

Publisher Taylor & Francis

Informa Ltd Registered in England and Wales Registered Number: 1072954 Registered office: Mortimer House, 37-41 Mortimer Street, London W1T 3JH, UK



Phosphorus, Sulfur, and Silicon and the Related Elements

Publication details, including instructions for authors and subscription information:

<http://www.informaworld.com/smpp/title~content=t713618290>

RING-CHAIN HALOGENOTROPIC TAUTOMERISM. 2,2-DIPHENYL-1,2 λ^4 -THIAPHOSPHOLANIUM BROMIDE \rightleftharpoons 3-BROMOPROPYLDIPHENYLPHOSPHINE SULFIDE

Dmitrii I. Lobanov^a; Inga M. Aladzheva^a; Olga V. Bykhovskaya^a; Pavel V. Petrovskii^a; Konstantin A. Lyssenko^a; Mikhail Yu. Antipin^a; Tatyana A. Mastryukova^a; Martin I. Kabachnik^a

^a A.N. Nesmeyanov Institute of Organoelement Compounds, Russian Academy of Sciences, Moscow, Russian Federation

To cite this Article Lobanov, Dmitrii I. , Aladzheva, Inga M. , Bykhovskaya, Olga V. , Petrovskii, Pavel V. , Lyssenko, Konstantin A. , Antipin, Mikhail Yu. , Mastryukova, Tatyana A. and Kabachnik, Martin I.(1997) 'RING-CHAIN HALOGENOTROPIC TAUTOMERISM. 2,2-DIPHENYL-1,2 λ^4 -THIAPHOSPHOLANIUM BROMIDE \rightleftharpoons 3-BROMOPROPYLDIPHENYLPHOSPHINE SULFIDE', Phosphorus, Sulfur, and Silicon and the Related Elements, 128: 1, 165 — 177

To link to this Article: DOI: 10.1080/10426509708031572

URL: <http://dx.doi.org/10.1080/10426509708031572>

PLEASE SCROLL DOWN FOR ARTICLE

Full terms and conditions of use: <http://www.informaworld.com/terms-and-conditions-of-access.pdf>

This article may be used for research, teaching and private study purposes. Any substantial or systematic reproduction, re-distribution, re-selling, loan or sub-licensing, systematic supply or distribution in any form to anyone is expressly forbidden.

The publisher does not give any warranty express or implied or make any representation that the contents will be complete or accurate or up to date. The accuracy of any instructions, formulae and drug doses should be independently verified with primary sources. The publisher shall not be liable for any loss, actions, claims, proceedings, demand or costs or damages whatsoever or howsoever caused arising directly or indirectly in connection with or arising out of the use of this material.

RING-CHAIN HALOGENOTROPIC TAUTOMERISM. 2,2-DIPHENYL-1,2λ⁴- THIAPHOSPHOLANIUM BROMIDE ⇌ 3- BROMOPROPYLDIPHENYLPHOSPHINE SULFIDE

DMITRII I. LOBANOV, INGA M. ALADZHEVA,
OLGA V. BYKHOVSKAYA, PAVEL V. PETROVSKII,
KONSTANTIN A. LYSSENKO, MIKHAIL YU. ANTIPIN,
TATYANA A. MASTRYUKOVA* and MARTIN I. KABACHNIK

*A.N. Nesmeyanov Institute of Organoelement Compounds, Russian Academy of
Sciences, Vavilova str., 28, 117813 Moscow, Russian Federation*

(Received 20 March 1997)

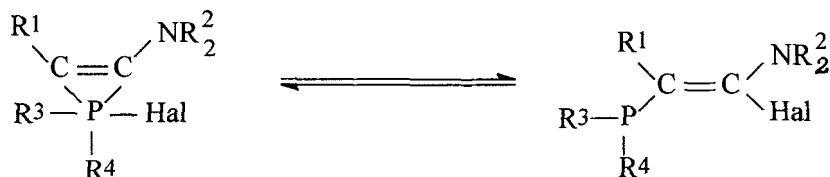
A new type of ring-chain anionotropic tautomerism for cyclic thiaphospholanium bromide **2A** and isomeric phosphine sulfide **2B** was investigated. Both of the tautomers were isolated in crystalline form. Their structures were proved by IR, Raman, ¹H, ³¹P NMR spectroscopy and X-ray analysis. In solution the equilibrium position doesn't depend on the kind of dissolved tautomer. The effect of the solvent, concentration and temperature on the equilibrium **2A** ⇌ **2B** was studied as well as kinetics of interconversion of tautomers.

Keywords: 3-bromopropyldiphenylphosphine sulfide; 2,2-diphenyl-1,2λ⁴-thiaphospholanium bromide; ring-chain halogenotropic tautomerism; kinetics of tautomers interconversion

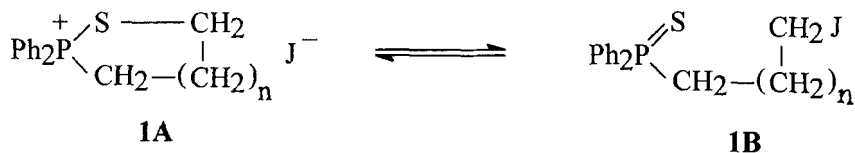
INTRODUCTION

The ring-chain anionotropic tautomerism occurs more rarely in organic chemistry than the prototropic one. In most cases the conclusion about ring-chain anionotropic tautomerism was based either on irreversible rearrangements or dual reactivity of the isomers.^[1] By now only few examples of true tautomeric equilibrium are known. The interesting covalent system belongs to them.^[2,3]

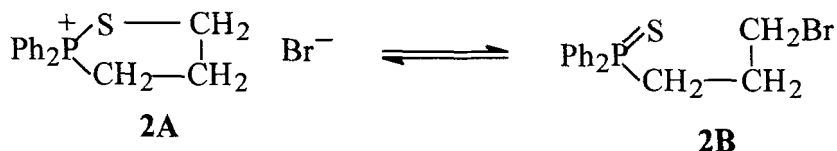
*Corresponding author.



In solution either equilibrium between two forms or its shift to one of them were observed depending on the substituents R and the halogen nature. Recently^[4,5] we synthesized 2,2-diphenyl-1,2λ⁴-thiaphospholanium and thiaphosphorinanium iodides **1A** (n = 1,2) by intramolecular S-alkylation. These compounds were found to exist in solution in equilibrium with the corresponding 3- and 4-iodoalkyldiphenylphosphine sulfides **1B**. The equilibrium depends on the solvent nature and the ring size.



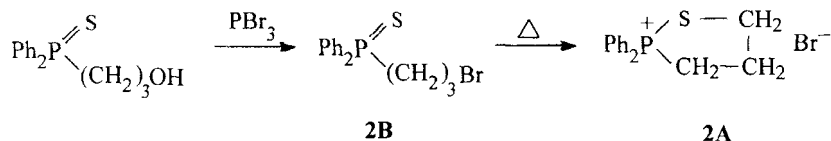
In the present work the bromo analogues of **1A** and **1B**—2,2-diphenyl-1,2λ⁴-thiaphospholanium bromide **2A** and 3-bromopropyldiphenylphosphine sulfide **2B** were studied.



RESULTS AND DISCUSSION

Synthesis and structure of **2A** and **2B**

Crystalline 3-bromopropyldiphenylphosphine sulfide **2B** was obtained by heating of 3-hydroxypropyldiphenylphosphine sulfide with phosphorus tribromide.



On fast heating sulfide **2B** has a m.p. 82–83°C. On slow heating it begins to melt at 82°C, but doesn't melt completely and crystallizes again. On heating of **2B** at 100°C for 30 min. bromide **2A** with m.p. 163–164°C was obtained. The structures of **2A** as cyclic thiaphospholanium salt and **2B** as open isomer were confirmed by IR, Raman, ^1H , ^{31}P NMR spectroscopy and X-ray analysis data.

The vibration spectra of crystalline **2A** contain the bands 570 cm^{-1} (IR) and 572 cm^{-1} (Raman) corresponding to P-S-CH₂ group. The open isomer **2B** has two bands in the region 600 cm^{-1} : $612, 622\text{ cm}^{-1}$ (IR) and $613, 623\text{ cm}^{-1}$ (Raman). Two bands of P=S vibrations are known in this region: $615, 639\text{ cm}^{-1}$ (IR), $614, 635\text{ cm}^{-1}$ (Raman) for $\text{Ph}_3\text{P(S)}$ ^[6] and $615, 630\text{ cm}^{-1}$ (IR), $613, 623\text{ cm}^{-1}$ (Raman) for $\text{Ph}_2\text{P(S)CH}_2\text{C(O)NEt}_2$.^[7]

After dissolving in CH_2Cl_2 the $^{31}\text{P}\{-^1\text{H}\}$ spectrum of bromide **2A** contains the singlet signal at $\delta 72.6\text{ ppm}^\dagger$. This is in close agreement with the signal at 72.2 ppm of cyclic iodide **1A** ($n = 1$) with well-established structure.^[4]

In the $^{31}\text{P}\{-^1\text{H}\}$ NMR spectrum of sulfide **2B** the signal at 42.0 ppm corresponds to the signal of open isomer **1B** ($n = 1$) at 42.2 ppm and the signal of 3-chloropropyldiphenylphosphine sulfide at 42.1 ppm.^[8]

X-ray Analysis Data

It was found that salt **2A** (Figure 1) is isostructural with the earlier investigated 2,2-diphenyl-1,2 λ^4 -thiaphospholanium iodide **1A** ($n = 1$) with bond lengths and angles (Table I) close to the corresponding values in the **1A** ($n = 1$).^[4] The five-membered thiaphospholanium ring in the crystal structure of **2A** has an envelope conformation, its central carbon atom is disordered over two positions C(2') and C(2'') which are displaced from the plane of other atoms of the ring by 0.57 and -0.37 \AA . The phosphorus atom is characterized by a slightly distorted tetrahedral environment with the endocyclic angle as small as $100.3(1)^\circ$. The opposite C(4)PC(10) angle in the phosphorus tetrahedron ($108.3(2)^\circ$) as well as the angles involving the P-S bond (C(4)PS $110.9(2)^\circ$ and C(10)PS $110.8(2)^\circ$) are close to the ideal tetrahedral value whereas the C(4)PC(1) and C(4)PC(10) angles ($113.5(3)^\circ$ and $113.0(3)^\circ$) are considerably widened. The P-S and S-C(3) bond lengths ($2.062(2)\text{ \AA}$ and $1.842(7)\text{ \AA}$, respectively) are similar to the corresponding values in the structure **1A** ($n = 1$) ($2.068(1)\text{ \AA}$ and $1.850(3)\text{ \AA}$). Slight decrease of the P-S and S-C(3) bond lengths in the structure **2A** in comparison with **1A** ($n = 1$), probably results from the libration shortening (X-ray inves-

[†]Because the spectrum is recorded within minutes after dissolving, the second signal at 42.0 ppm associated with isomer **2B** (3–5%) is also observed.

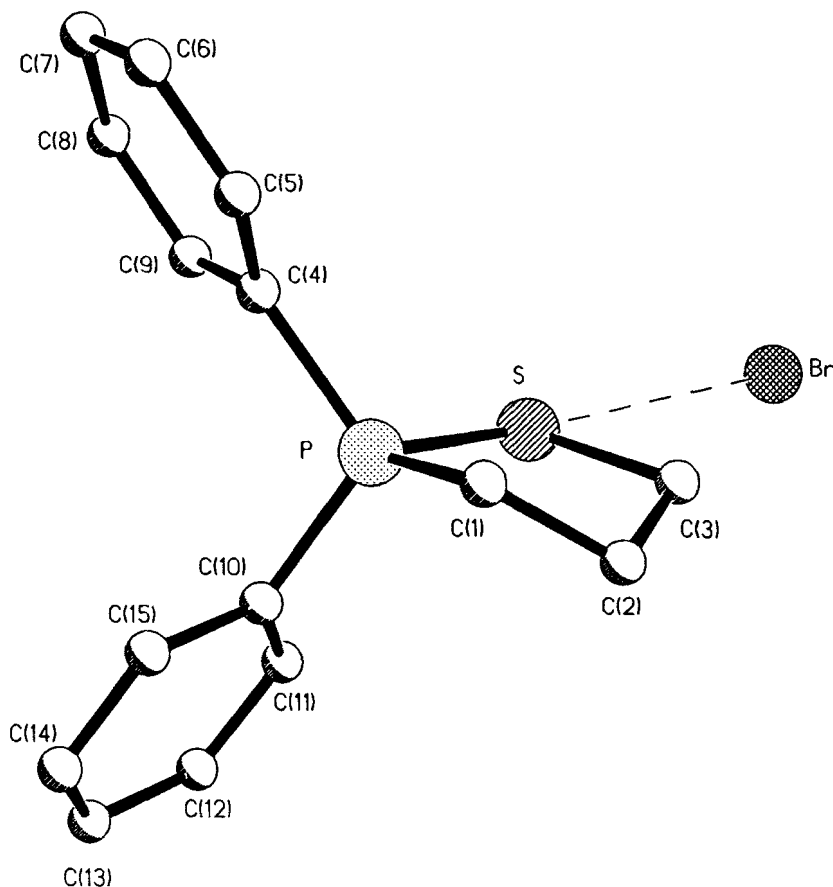


FIGURE 1 The general view of the cation and anion in structure **2A** showing the atomic numbering scheme. One of the positions of the disordered carbon atoms is omitted for clarity.

tigations of the **1A** ($n = 1$) salt was carried out at 153K and for **2A** at 293K). The Ph rings exhibit different orientations relative to the C(1)PSC(3) plane, the torsion angles SPC(4)C(5) and SPC(10)C(11) being equal to 117.6° and 9.5° , respectively. In the crystal structure of **2A** as well as in the earlier studied structures **1A** ($n = 1, 2$), short interionic contacts $P^+-S \cdots Hal^-$ are observed. These contacts in both thiaphospholanium salts **2A** and **1A** ($n = 1$) ($3.471(1)$ and $3.633(2)\text{\AA}$, respectively) are equally shortened as compared to the sums of the Van der Waals radii of corresponding atoms (the Van der Waals radii for S, Br and I are 1.81\AA , 1.97\AA and 2.11\AA , respectively).^[9] However in case of the thiaphosphorinanium ring **1A** ($n = 2$) the corresponding $S \cdots I^-$ was shown to be considerably longer ($3.825(1)\text{\AA}$).^[4] It is noteworthy, that the difference be-

TABLE I Important bond lengths (Å) and angles (deg) for **2A**

<i>Bond lengths</i>			
S-C(3)	1.842(7)	C(1)-C(2'')	1.45(2)
S-P	2.062(2)	C(1)-C(2')	1.487(11)
P-C(4)	1.780(5)	C(2')-C(3)	1.541(12)
P-C(10)	1.801(5)	C(2'')-C(3)	1.45(2)
P-C(1)	1.818(5)		
<i>Bond angles</i>			
C(3)-S-P	93.3(2)	C(2')-C(1)-P	104.6(5)
C(4)-P-C(10)	108.3(2)	C(1)-C(2')-C(3)	112.0(7)
C(4)-P-C(1)	113.5(3)	C(3)-C(2'')-C(1)	120.0(11)
C(10)-P-C(1)	113.0(3)	C(2'')-C(3)-S	110.1(7)
C(4)-P-S	110.9(2)	C-(2')-C(3)-S	110.6(5)
C(10)-P-S	110.8(2)	C(9)-C(4)-P	119.3(4)
C(1)-P-S	100.3(2)	C(5)-C(4)-P	122.1(4)
C(2B)-C(1)-P	107.2(7)	C(11)-C(10)-P	120.4(4)
C(15)-C(10)-P	118.5(4)		

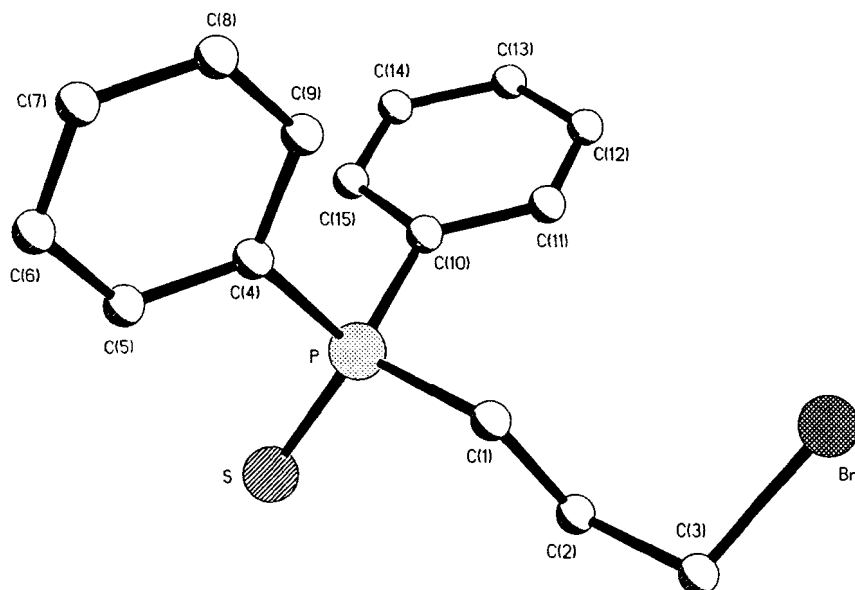
tween the S...Hal⁻ distances in the thiaphosphorinanium (**1A** ($n = 2$)) and thiaphospholanium (**2A** and **1A** ($n = 1$)) salts correlates with the significant difference in the P-S bond lengths, the latter being noticeably shorter in **1A** ($n = 2$) (2.048(1) Å) as compared to those in **2A** (2.062(2) Å) and **1A** ($n = 1$) (2.068(1) Å). In all investigated structures P⁺-S...Hal⁻ angles are close to 180° (the average value is 174°). Taking into account the specific direction of the S...Hal⁻ contact (see P⁺-S...Hal⁻ angles) and the correlation between the P-S bond lengths and the S...Hal⁻ distances, one can assume that this interionic contacts are due to the interaction of the halogen lone electron pair with the antibonding orbital of the P-S bond ($n \rightarrow \sigma^*$ interaction).

Bond lengths and angles in the open form **2B** (Figure 2) are quite typical of this sort of compounds^[10] (Table II). The P=S bond length in **2B** is equal to 1.933(2) Å and close to the corresponding bond in the Ph₃P=S (1.950 Å).^[11] The phosphorus atom has a slightly distorted tetrahedral environment: bond angles at the phosphorus atom vary in the range 102.9(2)°–114.2(3)°. The bromopropyl fragment adopts the synclinal conformation, the torsion angle SPC(1)C(2) is equal to 46°. The analysis of the crystal packing in **2B** shows that all intermolecular distances have the expected values.

Hence, the structures of bromides were unambiguously established as the cyclic isomer for bromide **2A** and the open isomer for bromide **2B**.

Tautomerism **2A** \rightleftharpoons **2B**. The Dependence on the Solvent Nature and Temperature

As it was cited above by dissolving of isomers **2A** and **2B** the ³¹P NMR spectra are in agreement with the structures of the isomers used. On keeping, the signals of the second isomer increase in the spectrum, and the spectrum corresponding

FIGURE 2 The general view of molecule **2B** and atomic numbering scheme.

to the equilibrium $2A \rightleftharpoons 2B$ is finally registered. The equilibrium position does not depend on which isomer was taken for the preparation of the solution. It is also remarkable that the 1H NMR spectrum of the acyclic bromide **2B** in $CDCl_3$ (after dissolution or in the state of equilibrium) contains a triplet signal typical of the protons of the methylene group $(CH_2)CH_2Br$ with δ 3.46 ppm ($^3J_{HH}$ 6.4 Hz). The equilibrium position depends to a significant extent on the solvent nature. The constants of the tautomeric equilibrium $2A \rightleftharpoons 2B$ in various sol-

TABLE II Important bond lengths (Å) and angles (deg) for **2B**.

<i>Bond lengths</i>			
Br-C(3)	1.964(6)	P-C(10)	1.816(5)
P-C(4)	1.813(5)	P-S	1.933(2)
P-C(1)	1.816(6)		
<i>Bond angles</i>			
C(4)-P-C(1)	102.9(3)	C(1)-C(2)-C(3)	113.8(5)
C(4)-P-C(10)	105.6(2)	C(2)-C(3)-Br	110.6(4)
C(1)-P-C(10)	107.3(3)	C(5)-C(4)-P	120.6(5)
C(4)-P-S	114.2(2)	C(9)-C(4)-P	119.9(4)
C(1)-P-S	113.0(2)	C(11)-C(10)-P	123.7(4)
C(10)-P-S	112.9(2)	C(15)-C(10)-P	117.9(4)
C(2)-C(1)-P	114.6(4)		

TABLE III The dependence of the equilibrium position $2A \rightleftharpoons 2B$ on the solvent nature, $K_T = [2B]/[2A]$, (20°C), $c = 0,1$ mol/l

Solvents	Content of 2A %	K_T
CH ₂ Cl ₂	38	1.63
CHCl ₃	65	0.54
CH ₃ CN	82	0.22
CH ₃ COCH ₃	2	49.0
(CH ₃) ₂ NCHO	42	1.38

vents are listed in Table III. The content of the cyclic form **2A** is larger in more polar acetonitrile as well as in iodides **1A** ($n = 1,2$) as compared to that in methylene chloride and chloroform. However, a low content of the cyclic form in acetone and dimethylformamide does not correlate with the polarity of solvents. A sharply increased content of the acyclic form is, probably, associated with specific solvation of the P=S groups in these solvents. The temperature dependence of the position of tautomeric equilibrium $2A \rightleftharpoons 2B$ in methylene chloride is presented in Table IV. As the temperature increases, the content of the open form **2B**[‡] in the equilibrium mixture increases. The ΔH value for the tautomeric equilibrium $2A \rightleftharpoons 2B$ was calculated from the dependence of $\ln K_T$ on $1000/T$ (Figure 3), for which an excellent linear correlation with a correlation coefficient 0.995 is observed. As in other ring-chain tautomeric systems, the transformation of the cyclic form to the open one is an endothermal process. In Table IV are also listed other thermodynamical parameters.

Kinetics of Tautomeric Transformations

The rate of tautomeric transformations $2A \rightleftharpoons 2B$ was studied in methylene chloride solutions at 20°C by the ³¹P-¹H NMR method. Both cyclic and open isomers were used as starting substances. The data obtained are listed in Table

TABLE IV The temperature dependence of the tautomeric equilibrium constants and some thermodynamic parameters for the system $2A \rightleftharpoons 2B$ in CH₂Cl₂, $c = 0.1$ mol/l

$T(K)$	K_T	ΔG (kcal/mol)	ΔH (kcal/mol)	ΔS (e.u.)
278	0.88	0.071		
293	1.63	-0.284	6.92	24.6
308	2.85	-0.641		
318	4.32	-0.924		

[‡]Earlier^[12] the studies of the mechanism of polymerization of deoxothiolphostones Ph-P-S(CH₂)_n-CH₂ ($n = 2,3$) in the presence of MeI, PhCH₂Br in modelling experiments performed directly in ampoules for measuring ³¹P NMR spectra showed that, along with the signals of the thiaphosphonium salt, the signals, which were presumably assigned to the isomeric acyclic sulfide, appeared in the spectra of solutions at 80°C. These signals disappeared on lowering the temperature to 35°C.

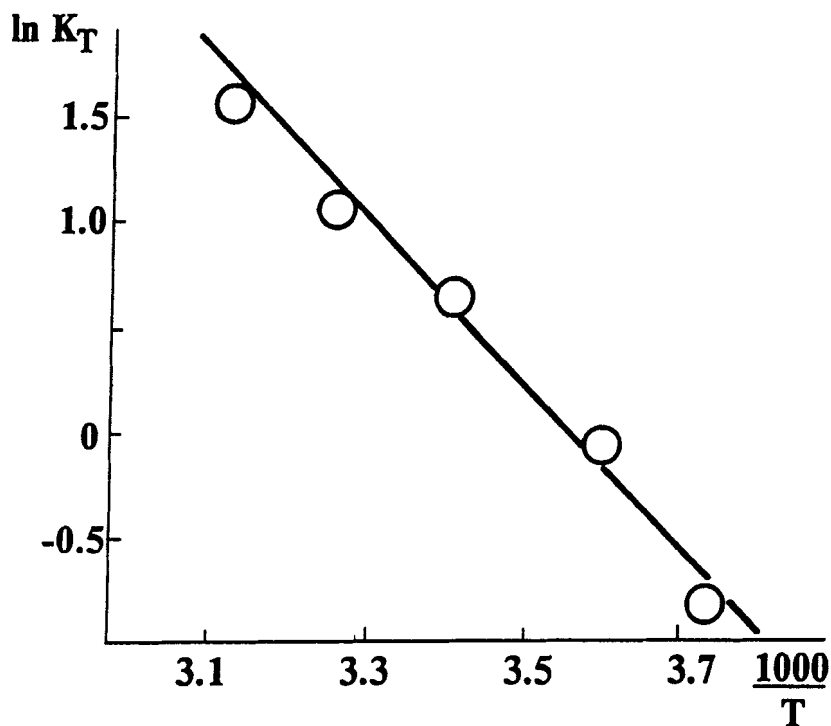


FIGURE 3 The temperature dependence of the tautomeric equilibrium constants $2A \rightleftharpoons 2B$ in CH_2Cl_2 , $c = 0.1$ mol/l.

V. The curves of the transformation of **2A** and **2B** to the equilibrium mixture $2A \rightleftharpoons 2B$ are presented in Figure 4 and Figure 5.

In both cases, the equilibrium is achieved in about 15 h, and the ratio between the two forms in the equilibrium mixture does not depend on the starting com-

TABLE V The time dependence of the tautomers **2B** and **2A** content during the equilibrium establishment (20°C, $c = 0.1$ mol/l)

Starting isomer 2A		Starting isomer 2B	
Time (h)	% B	Time (h)	% A
0	0	0	0
0.25	3.9	0.08	1.6
0.58	10.3	0.42	4.6
1.00	21.1	0.83	9.8
1.67	30.4	1.5	15.1
3.00	42.7	2.83	19.4
4.75	45.2	4.58	27.3
23.00	62.0	22.83	38.0

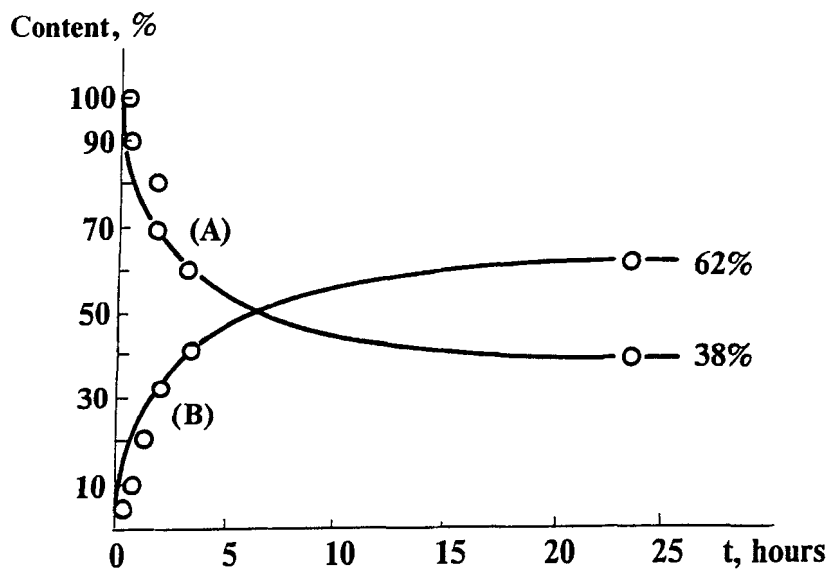


FIGURE 4 The kinetic curves of 2A transformation to the equilibrium mixture 2A + 2B.

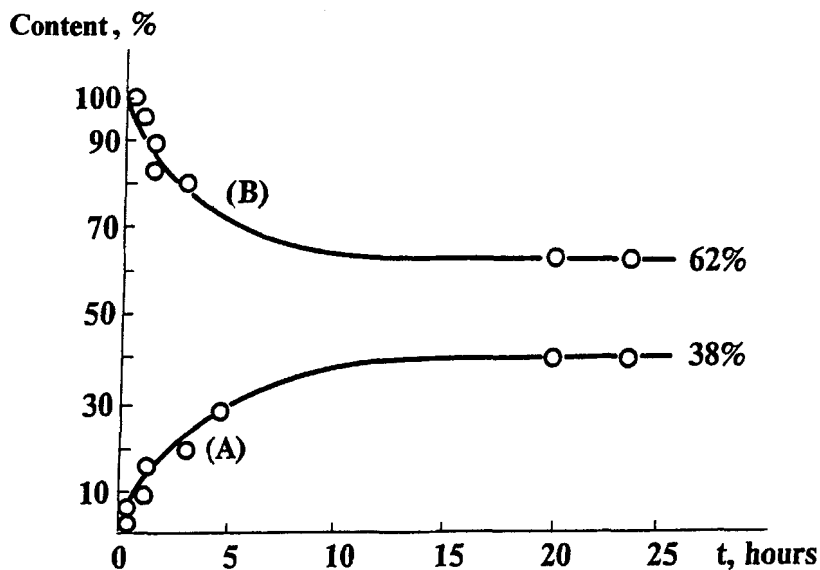


FIGURE 5 The kinetic curves of 2B transformation to the equilibrium mixture 2B + 2A.

TABLE VI The kinetic constants of interconversion **2A** and **2B** (k min^{-1} ; CH_2Cl_2 , 20°C , $c = 0.1 \text{ mol/l}$)

2A \rightleftharpoons 2B	2B \rightleftharpoons 2A
$k_1 = 2.97 \times 10^{-3}$	$k'_1 = 1.67 \times 10^{-3}$
$k_2 = 1.80 \times 10^{-3}$	$k'_2 = 2.72 \times 10^{-3}$

pounds. The rate constants k_1 and k_2 for the interconversions **2A** \rightleftharpoons **2B** and **2B** \rightleftharpoons **2A** were calculated from the experimental data using the equations for reversible monomolecular reactions and the tautomeric equilibrium constants (Table VI)[†]. The k_1 and k_2 constants were, naturally, cross-equal: $k_1 = k'_2$ and $k_2 = k'_1$ (within the experiment accuracy). It is noticeable that the cation and anion in bromide **2A** behave, in the kinetics sense, as one particle forming, probably, a tight ion pair in CH_2Cl_2 solution. It follows from the fact that the ratio $[\text{2B}]/[\text{2A}]$ is constant at different initial concentrations (Table VII). If the thiaphospholanium salt dissociated to ions (two particles), the ratio between the tautomeric forms $[\text{2B}]/[\text{2A}]$ would decrease on dilution, as it was the case for dimethylformamide, for which ionic dissociation is possible.

EXPERIMENTAL

All experiments were carried out in argon atmosphere; solvents were distilled in argon also. IR spectra were determined on UR-20 infrared spectrophotometer (KBr). Raman spectra of **2A** and **2B** crystals were recorded on U-1000 instrument with laser-excited atomic fluorescence ($\nu = 514 \text{ nm}$) in Spectroscopic Center RAS. NMR spectra were recorded on a Bruker WP-200SY spectrometer at 200.13 MHz (^1H) using HMDS as internal standart, and 80.01 MHz (^{31}P) using 85% H_3PO_4 as external standart. The solution concentrations were 0.1

TABLE VII The concentration influence on the ratio $[\text{2B}]/[\text{2A}]^*$ in two solvents (20°C).

Initial concentration $c \text{ mol/l}$	$[\text{2B}]/[\text{2A}]$	
	CH_2Cl_2	DMFA
0.3	1.2	1.7
0.2	1.2	1.5
0.1	1.6	1.4
0.05	1.5	1.2
0.02	1.3	0.9

*) Calculated from the integral intensity ratio of ^{31}P NMR spectra

[†]The straight line in the coordinates $\ln Q/(Q-x)$ and t , where $Q = K_T/(K_T + 1)$, have correlation coefficients $r = 0.963$ (transformation of **2A** to the equilibrium mixture) and $r = 0.994$ (transformation of **2B** to the equilibrium mixture).

mol/l. The kinetic investigations were carried out in sealed NMR tubes. The transformation were monitored by ^{31}P NMR spectra.

X-ray experimental data for **2A** and **2B** were obtained at 293K using a four-circle "Siemens P3/PC" diffractometer (monochromated $\text{MoK}\alpha$ radiation, $\theta/2\theta$ -scan, $2\theta < 60^\circ$). The crystals of **2A** and **2B** are monoclinic at 293K. Important crystallographic parameters for **2A** are: $a = 12.034(4)\text{\AA}$, $b = 11.788(3)\text{\AA}$, $c = 11.462(4)\text{\AA}$, $\beta = 115.66(2)^\circ$, $V = 1465\text{\AA}^3$, $Z = 4$, space group $P2_1/c$, $\mu = 3.036\text{ mm}^{-1}$, $F(000) = 688$, $d_{\text{calc}} = 1.537\text{ g cm}^{-3}$; and for **2B**: $a = 23.735(8)\text{\AA}$, $b = 10.536(3)\text{\AA}$, $c = 14.469(5)\text{\AA}$, $\beta = 123.34(2)^\circ$, $V = 3023(2)\text{\AA}^3$, $Z = 8$, space group $C2/c$, $\mu = 2.944\text{ mm}^{-1}$, $F(000) = 1376$, $d_{\text{calc}} = 1.491\text{ g cm}^{-3}$. The total number of the measured reflections for **2A** and **2B** structures were 2850 and 3489.

Both structures were solved by direct method and refined by full-matrix least squares against F^2 in the anisotropic (H-atoms isotropic) approximation. All hydrogen atoms were located from the electron density difference synthesis and were included in the refinement using the riding motion model. The difference Fourier synthesis for **2A** revealed additional peaks which were interpreted as a disorder of the central carbon atom of the thiaphospholane ring. The occupancies of the two positions labelled C(2') and C(2'') refined to 0.6 and 0.4, respectively.

The refinement for **2A** and **2B** converged to $R1 = 0.0736$, 0.0620 for the 2487 and 1978 independent reflections with $I > 2\sigma(I)$; $wR2 = 0.1735$, 0.1527 and $GOF = 1.01$, 1.078 for all 3077 and 2706 independent reflections, respectively. All calculations were performed using an IBM PC computer and SHELXTL PLUS 5 (gamma version) program package. The final atomic parameters for structures **2A** and **2B** are listed in the Tables VIII and IX.

3-Bromopropyldiphenylphosphine Sulfide **2B**

To a stirring suspension of 1.1 g ($4.10 \cdot 10^{-3}\text{ mol}$) 3-oxypropyldiphenylphosphine sulfide¹⁴ in 15 ml of dry benzene solution was added dropwise over 20 min 0.6 g ($2.2 \cdot 10^{-3}\text{ mol}$) of PBr_3 in 5 ml of benzene. The mixture was refluxed for 3h, cooled and 5 ml of water and 25 ml of CHCl_3 were added. The organic layer was washed with a concentrated solution of NaHCO_3 (5 ml) and with water (5 ml) and dried over Na_2SO_4 . The solvents were evaporated under reduced pressure and the residue was extracted with boiling heptane. The white crystals **2B** were obtained from heptane solution by cooling. Yield 1.1 g (81%), m.p. $81\text{--}83^\circ\text{C}$; after recrystallization from ethanol m.p. $82\text{--}83^\circ\text{C}$, $\nu_{\text{P=S}} 612, 622\text{ cm}^{-1}$ (IR); $613, 623\text{ cm}^{-1}$ (RS); $^{31}\text{P}\{-^1\text{H}\}$ NMR CH_2Cl_2 : $\delta 42.0\text{ ppm}$; ^1H NMR (CDCl_3): $\delta 2.17\text{--}2.23$ (m, 2H, $\text{CH}_2\text{CH}_2\text{CH}_2$); $2.611, 2.623$ (dt, $^3J_{\text{HH}} 11.4\text{ Hz}$; $^2J_{\text{PH}} 4.8\text{ Hz}$, 2H, PCH_2CH_2); 3.46 (t, $^3J_{\text{HH}} 6.4\text{ Hz}$, 2H, CH_2Br); $7.25\text{--}7.85$ (m,

TABLE VIII Atomic coordinates ($\times 10^4$) and equivalent isotropic displacement parameters ($\text{\AA}^2 \times 10^3$) for **2A**.

Atom	<i>x</i>	<i>y</i>	<i>z</i>	<i>U</i>
Br	1534(1)	−10870(1)	−2446(1)	47(1)
S	2234(1)	−8478(1)	−490(1)	40(1)
P	2497(1)	−7003(1)	564(1)	30(1)
C(1)	1159(6)	−7044(6)	908(6)	43(1)
C(2')	923(10)	−8272(8)	993(11)	40(2)
C(2'')	393(14)	−7985(14)	178(20)	48(4)
C(3)	946(7)	−8949(7)	−146(8)	62(2)
C(4)	2521(4)	−5804(4)	−369(5)	31(1)
C(5)	1644(5)	−4935(5)	−688(5)	42(1)
C(6)	1665(6)	−4033(6)	−1417(6)	51(1)
C(7)	2563(6)	−3963(6)	−1879(6)	50(1)
C(8)	3435(6)	−4819(6)	−1562(7)	53(2)
C(9)	3432(6)	−5725(5)	−810(7)	47(1)
C(10)	3934(4)	−7047(4)	2002(4)	31(1)
C(11)	4776(5)	−7911(5)	2178(5)	43(1)
C(12)	5903(6)	−7893(6)	3301(6)	52(2)
C(13)	6168(6)	−7046(6)	4185(6)	48(1)
C(14)	5318(5)	−6197(6)	4010(6)	45(1)
C(15)	4194(5)	−6178(5)	2911(5)	37(1)

10 H, C₆H₅); Anal. Found: C 52.90; H 4.63; P 9.42%. Calcd. for C₁₅H₁₆BrPS: C 53.11; H 4.75; P 9.13%.

2,2-Diphenyl-1,2λ⁴-thiaphospholanium Bromide **2A**

0.2 g bromide **2B** was heated slowly without solvent. The compound melted at 85°C and began to crystallize at once. After heating at 100°C during 30 min. the reaction mixture was solid. Recrystallization from CHCl₃-CH₃COOC₂H₅

TABLE IX Atomic coordinates ($\times 10^4$) and equivalent isotropic displacement parameters ($\text{\AA}^2 \times 10^3$) for **2B**.

Atom	<i>x</i>	<i>y</i>	<i>z</i>	<i>U</i>
Br	531(1)	6285(1)	1833(1)	84(1)
P	1673(1)	9658(1)	4627(1)	35(1)
S	2580(1)	10211(2)	5162(1)	57(1)
C(1)	1254(3)	8913(6)	3275(5)	43(1)
C(2)	1668(3)	7921(6)	3158(5)	45(1)
C(3)	1298(3)	7263(7)	2044(6)	58(2)
C(4)	1101(3)	10932(5)	4417(4)	41(1)
C(5)	1263(3)	12171(6)	4378(5)	50(1)
C(6)	793(5)	13125(8)	4125(7)	66(2)
C(7)	190(4)	12846(8)	3955(6)	66(2)
C(8)	20(4)	11615(8)	3989(7)	67(2)
C(9)	464(3)	10647(7)	4220(5)	55(2)
C(10)	1640(3)	8545(5)	5555(4)	38(1)
C(11)	1344(3)	7364(6)	5234(6)	49(1)
C(12)	1364(4)	6548(7)	5992(7)	62(2)
C(13)	1667(4)	6882(8)	7056(6)	66(2)

mixture gave 0.15 g (75%) of pure compound **2A** m.p. 163–164°C. $\nu_{\text{p.s}}$ 570 cm^{-1} (IR); 572 cm^{-1} (RS); ^{31}P - $\{^1\text{H}\}$ NMR (CH_2Cl_2): δ 72.6 ppm; ^1H NMR (CDCl_3): δ 2.509; 2.634 (dpent, $^3\text{J}_{\text{HH}}$ 6.4 Hz $^3\text{J}_{\text{PH}}$ 25.3 Hz, 2H, $\text{P}^+\text{CH}_2\text{CH}_2$); 3.379, 3.412 (dt, $^3\text{J}_{\text{HH}}$ 6.4 Hz, $^3\text{J}_{\text{PH}}$ 6.4 Hz; 2H, $\text{CH}_2\text{CH}_2\text{SP}^+$); 3.710, 3.757 (dt, $^3\text{J}_{\text{HH}}$ 6.4 Hz, $^2\text{J}_{\text{PH}}$ 9.0 Hz, 2H, $\text{P}^+\text{CH}_2\text{CH}_2$); 7.46–7.91 (m, 10 H, C_6H_5). Anal. Found: C 52.78; H 4.59; P 9.19%. Calcd. for $\text{C}_{15}\text{H}_{16}\text{BrPS}$: C 53.11; H 4.75; P 9.13%.

Acknowledgements

The authors are grateful to the Russian Fundamental Research Foundation (grants 96-03-32992, 94-03-08338) for financial support, in part, of this work.

References

- [1] R. E. Valters and W. Flitsch, *Ring-chain tautomerism*, (Plenum Press, New York, London, 1985), Chap. 2, pp. 41–49
- [2] N. V. Lukashev, P. E. Zhichkin, M. A. Kazankova and I. P. Beletskaya, *Tetrahedron Lett.*, **34**, 1331 (1993).
- [3] N. V. Lukashev, A. D. Averin, P. E. Zhichkin, M. A. Kazankova and I. P. Beletskaya, *Phosphorus, Sulfur, and Silicon*, **109–110**, 609 (1996).
- [4] I. M. Aladzheva, O. V. Bykhovskaya, D. I. Lobanov, K. A. Lyssenko, O. V. Shishkin, M. Yu. Antipin, Yu. T. Struchkov, T. A. Mastryukova and M. I. Kabachnik, *Mendeleev Comm.*, 48 (1996).
- [5] T. A. Mastryukova, D. I. Lobanov, P. V. Petrovskii, I. M. Aladzheva, O. V. Bykhovskaya, K. A. Lyssenko, M. Yu. Antipin and M. I. Kabachnik, XIth International Conference on Chemistry of Phosphorus Compounds, Kazan, Russia, September 8–13, 1996, abstracts, p. 36.
- [6] J. Kincaid, K. Nakamoto, J. A. Tiethof, D. W. Meek, *Spectrochim. Acta*, **30A**, 209 (1974).
- [7] M. I. Pasechnik, I. M. Aladzheva, E. I. Matrosov, A. P. Pisarevskii, Yu. T. Struchkov, T. A. Mastryukova, M. I. Kabachnik, *Rus. Chem. Bull.*, **43**, 660 (1994).
- [8] I. M. Aladzheva, O. V. Bykhovskaya, D. I. Lobanov, P. V. Petrovskii, T. A. Mastryukova, M. I. Kabachnik, *Zh. Obshch. Khim.*, **65**, 1586 (1995).
- [9] Yu. V. Zefirov and P. M. Zorky, *Russ. Chem. Rev.*, **64**, 446 (1995).
- [10] F. H. Allen, O. Kennard, D. G. Watson, L. Brammer, A. G. Orpen and R. Taylor, *J. Chem. Soc. Perkin Trans II*, S6 (1987).
- [11] D. G. Gilheany, *The Chemistry of Organophosphorus Compounds* (Ed. F.R. Hartley, Wiley-Interscience, Chichester, 1992), Vol. 2, Chap. 1, pp. 1–51.
- [12] Sh. Kobayashi, M. Suzuki and T. Saegusa, *Macromolecules*, **19**, 462 (1986).
- [13] Ref. 1, p. 262.
- [14] L. Maier, *Chim. Acta*, **49**, 1249 (1966).